

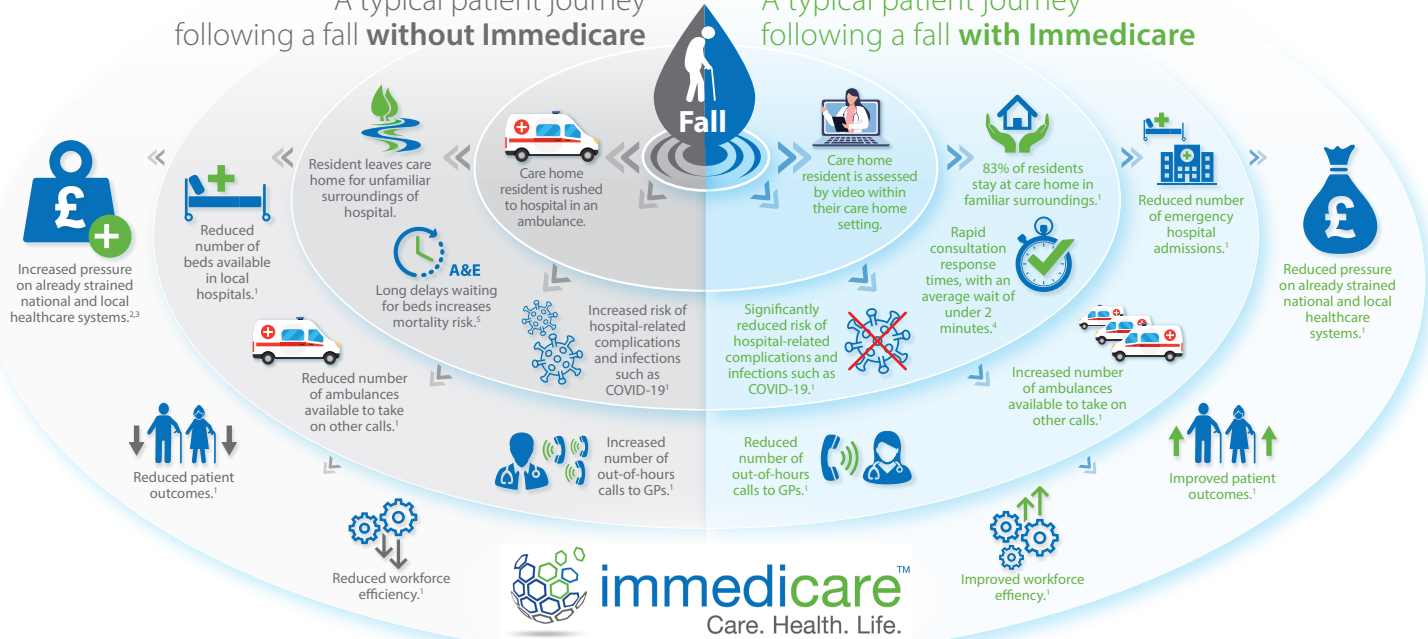
Immedicare has a positive ripple effect

When care home residents receive rapid, high-quality care in a familiar environment, it reduces the risks associated with lengthy hospital stays, and reduces pressure on NHS services and budgets.¹

Falls are the leading cause of emergency hospital admissions for older people.^{2,3}

A typical patient journey following a fall **without Immedicare**

A typical patient journey following a fall **with Immedicare**



References

1. Immedicare falls data. Data on file 2020
2. <https://www.nhs.uk/Scorecard/Pages/IndicatorFacts.aspx?MetricId=8135> [Last accessed November 2020]
3. <https://www.gov.uk/government/publications/falls-applying-all-our-health/falls-applying-all-our-health> [Last accessed November 2020]
4. Immedicare calls data. Data on file 2020
5. <https://www.theguardian.com/society/2019/dec/10/thousands-of-patients-die-waiting-for-beds-in-hospitals-study> [Last accessed November 2020]